



NORTHLANDER



2023 / 2024

Dream. Explore. Discover.

Dream of a place where street noise fades, and all you hear is the crackling of a bonfire. Where the concrete jungle is replaced by an actual forest and beautiful waters. And the only thing scheduled on your calendar is relaxation.

Northlander can help you explore wherever those dreams may take you. With Northlander, you are choosing experts in the industry, featuring quality craftsmanship since 1964. With over 50 floorplans and 5 designer décor packages – all with options for customization – let us help you discover where the ordinary is left behind and the extraordinary surrounds you!





06

ESCAPE ALL SEASON

Enjoying all four Canadian seasons is at the forefront of Northlander's Escape All Season. Designed to allow you to appreciate the great outdoors while enjoying indoor comforts suited to your lifestyle.



20

ESCAPE

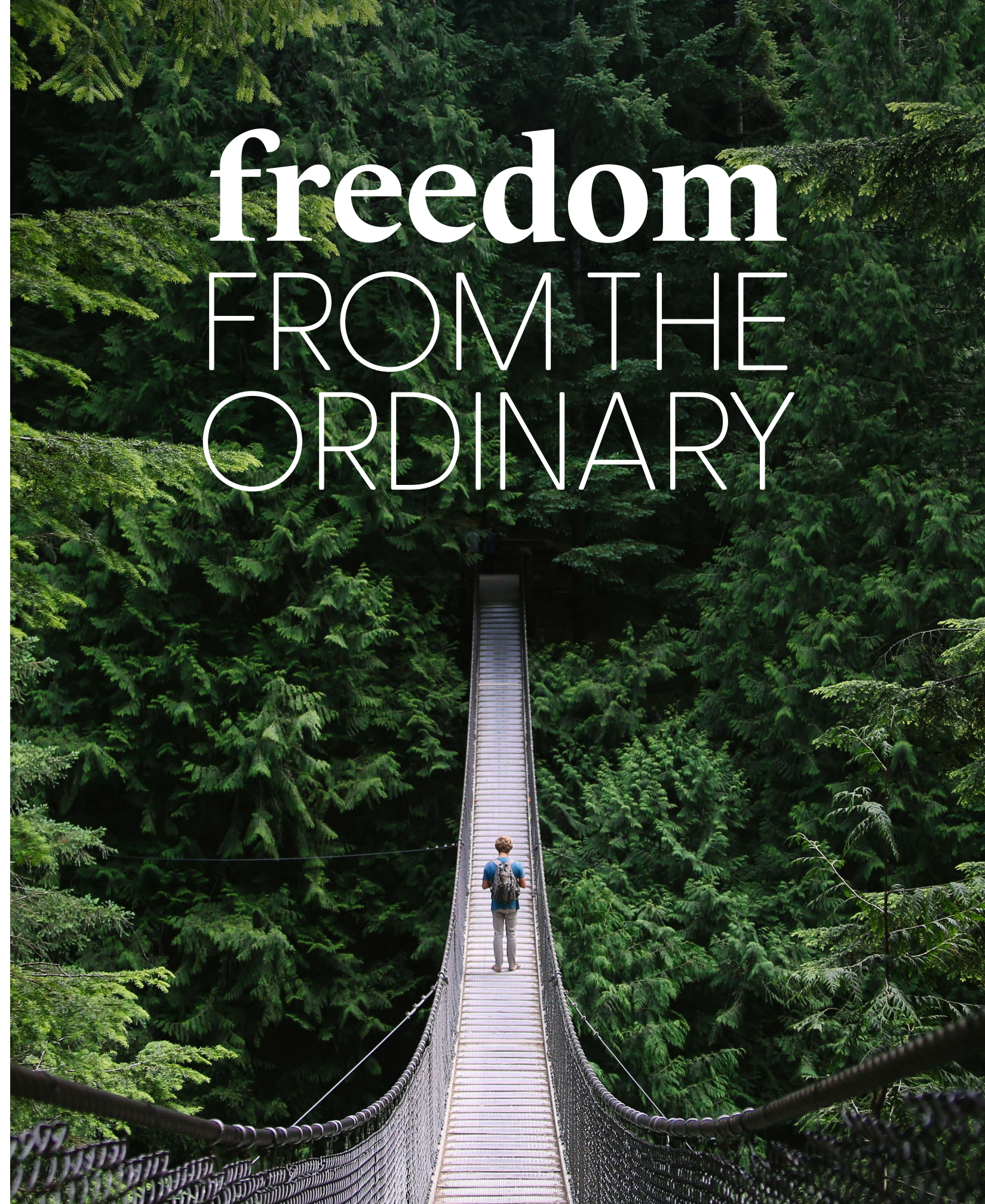
Northlander's Escape Series allows you to explore more than ever. With brand new floorplans to choose from, you'll be sure to find your ultimate getaway.



36

REFLECTION

Reflect on all the possibilities with Northlander's Reflection Series. Featuring multiple bedroom configurations - offering enough room for the whole family.



freedom FROM THE ORDINARY

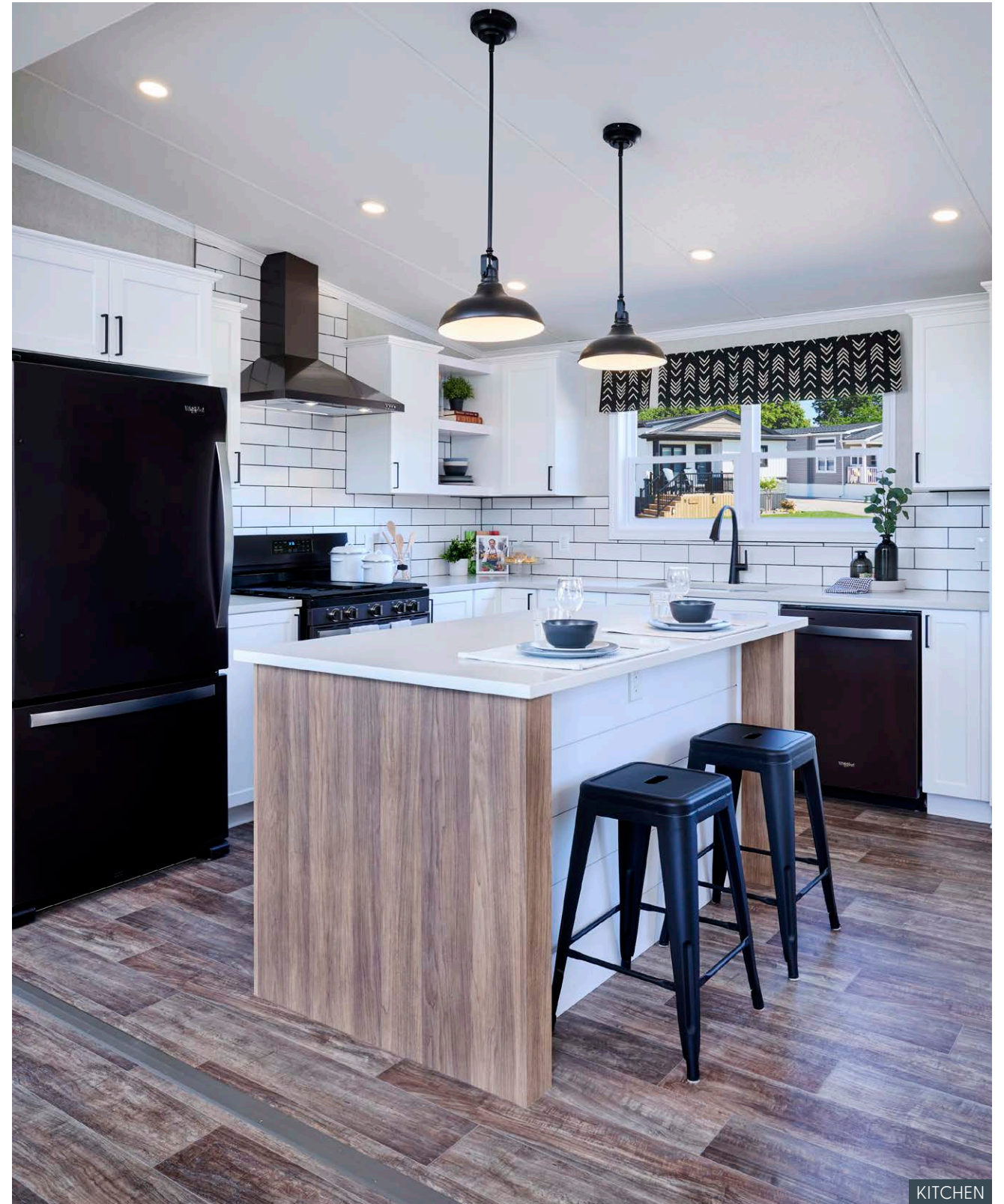


Escape

ALL SEASON

Why should vacation be seasonal? Northlander's Escape All Season allows for year-round comfort just steps from the great outdoors. Offering single and double wide floorplans customized to your lifestyle, the Escape All Season is equipped with a well-insulated

ceiling, walls and floor to enjoy the Canadian winters. It features custom finishes and offers an array of options and upgrades. We at Northlander, put our heart and soul into guaranteeing your comfort so you can escape no matter what time of the year.

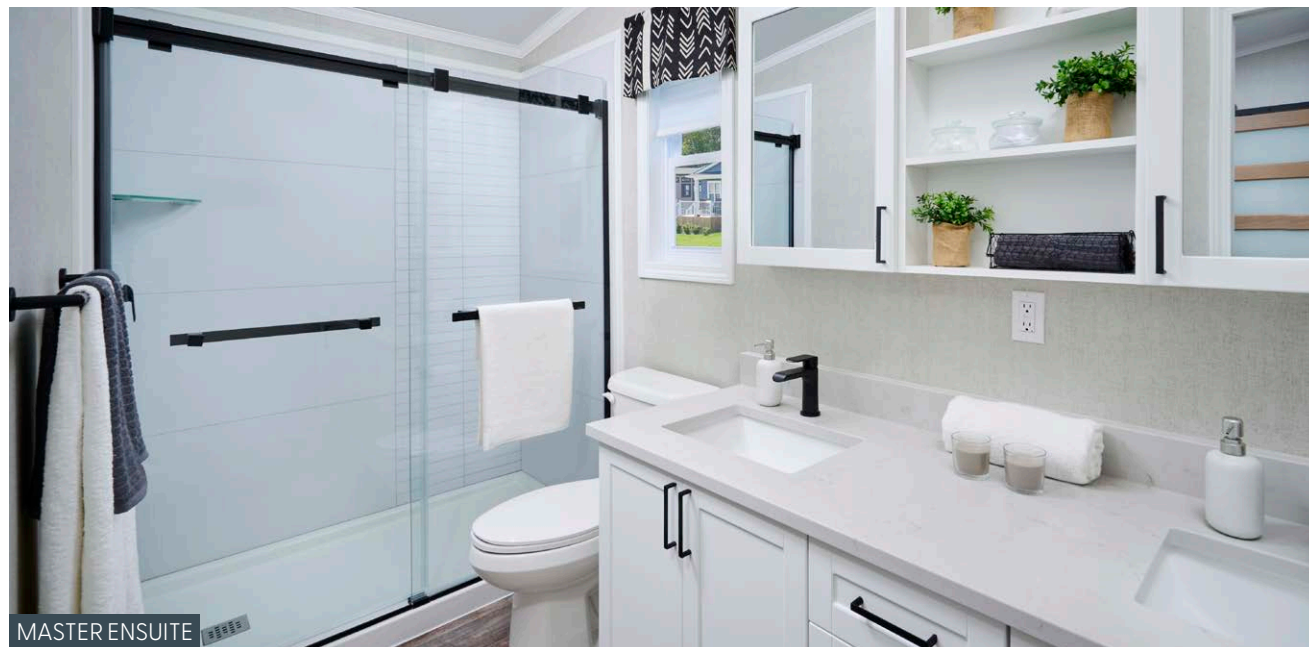


KITCHEN

MASTER BEDROOM



KITCHEN + DINING ROOM



MASTER ENSUITE



KITCHEN



LAUNDRY



LIVING ROOM

MODERN & BOLD

Transform your living room into a modern oasis with this bold and beautiful open concept living room and kitchen area. Featuring matte black fixtures, trendy furnishings and the Smoked Century Décor Package. Custom-made drapes add an unexpected softness to the bold contrasting fabrics that complement the fixtures making this feel like a unified space.

EFFORTLESS BALANCE

There is no better way to add a layer of luxury to a living room than a fireplace. This 74" electric fireplace is surrounded by shiplap, tall cabinetry for added storage and windows that offer clean lines and simplicity for today's modern living.

"UNIQUELY YOURS"

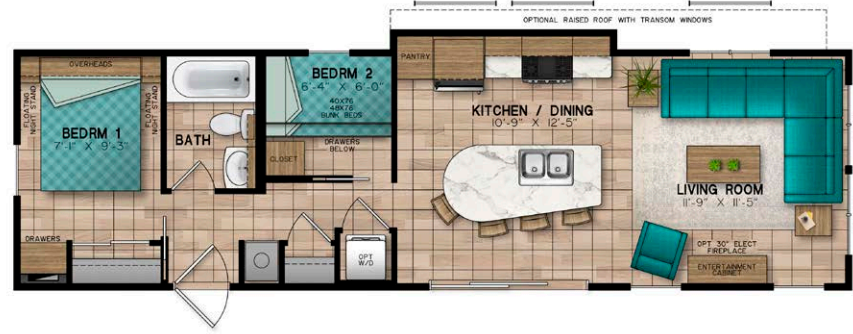
The Escape All Season features 16 floorplans to meet a range of lifestyles. At Northlander, we understand that every family has unique needs and we are happy to customize - starting with the floorplan.

LAUNDRY GOALS

Laundry may be the last thing on your mind while on vacation, but with the compact yet functional laundry room in the Escape All Season, you'll have the perfect spot to stay organized and on top of your to-do's.

LIVING IN WARMTH & COMFORT

Enjoy year-round vacationing at its best with the Escape All Season. Enjoy climate controlled comfort whether you're watching the snow fall and sipping on your morning coffee in January or staying cool on those hot August nights.



ANCONA

23-4920-2 | 42' x 12'

- 2 bedroom
- 1 bathroom
- 515 sq. ft.



AJAX

23-4998-2 | 42' x 12'

- 2 bedroom
- 1 bathroom
- 504 sq. ft.



ATLANTA

21-4999-2 | 43' x 12'

- 2 bedroom
- 1 bathroom
- 537 sq. ft.



ARLINGTON

23-5083-2 | 44' x 12'
Addition 20' x 12'

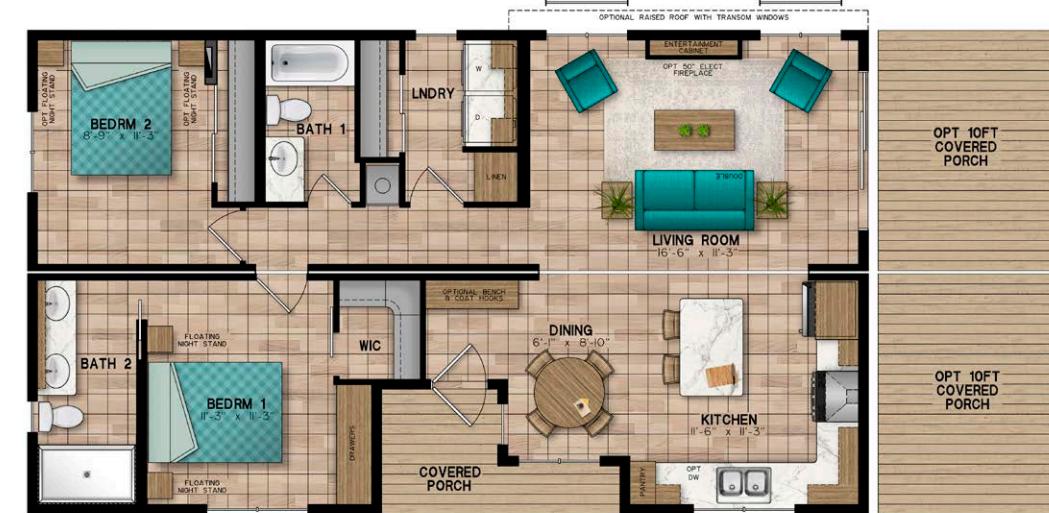
- 2 bedroom
- 1 bathroom
- 528 sq. ft.
- + Addition 240 sq. ft.



AKRON

23-5156-2 | 42' x 12'
Addition 42' x 12'

- 2 bedroom
- 2 bathroom
- 504 sq. ft.
- + Addition 504 sq. ft.



ANTWERP

23-5113-2 | 42' x 12'
Addition 42' x 12'

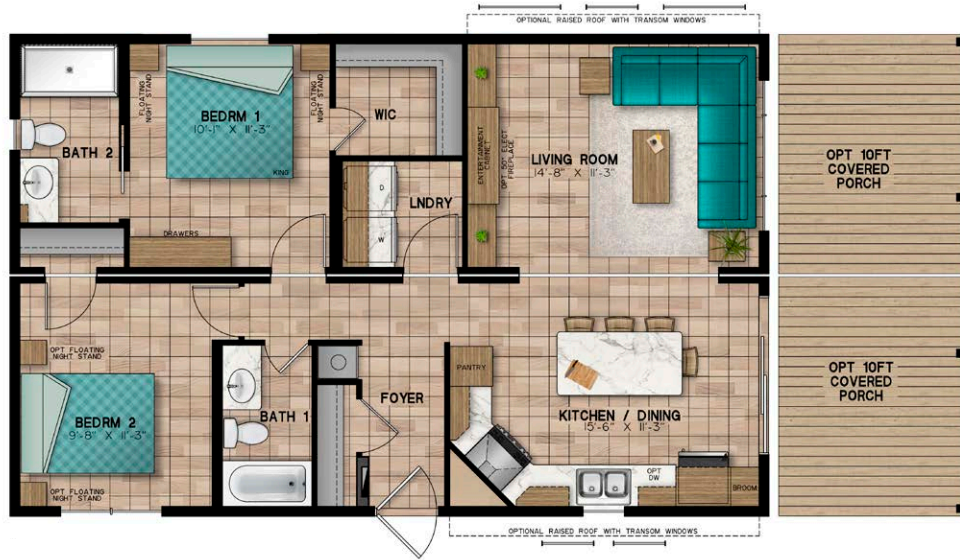
- 2 bedroom
- 2 bathroom
- 504 sq. ft.
- + Addition 453 sq. ft.



ARKLOW

23-5142-2 | 45' x 12'
Addition 48' x 12'

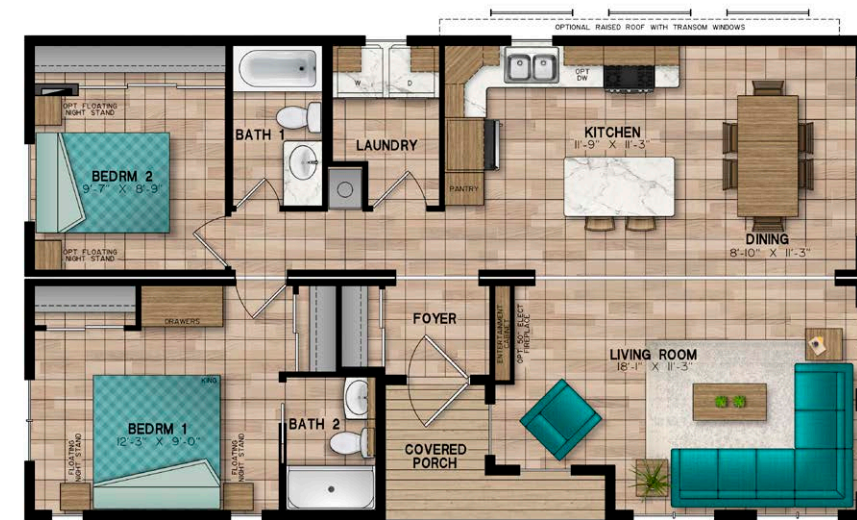
- 2 bedroom
- 2 bathroom
- 540 sq. ft.
- + Addition 420 sq. ft.



AURORA

23-5082-2 | 38' x 12'
Addition 38' x 12'

- 2 bedroom
- 2 bathroom
- 456 sq. ft.
- + Addition 456 sq. ft.



ANDOVER

23-4901-2 | 42' x 12'
Addition 42' x 12'

- 2 bedroom
- 2 bathroom
- 504 sq. ft.
- + Addition 457 sq. ft.



ASHBURY

23-5080-2 | 45' x 12'
Addition 41' x 12'

- 2 bedroom
- 2 bathroom
- 540 sq. ft.
- + Addition 468 sq. ft.



ABERDEEN

23-4746-2 | 45' x 12'
Addition 45' x 12'

- 2 bedroom
- 2 bathroom
- 540 sq. ft.
- + Addition 531 sq. ft.



AMARILLO

23-4959-2 | 45' x 12'
Addition 45' x 12'

- 2 bedroom
- 2 bathroom
- 529 sq. ft.
- + Addition 444 sq. ft.



ALGOMA

23-5081-2 | 45' x 12'
Addition 27' x 12'

- 2 bedroom
- 2 bathroom
- 540 sq. ft.
- + Addition 324 sq. ft.



ACADIA

23-4855-3 | 42' x 12'
Addition 42' x 12'

- 3 bedroom
- 2 bathroom
- 533 sq. ft.
- + Addition 438 sq. ft.

ESCAPE ALL SEASON SPECIFICATIONS

FRAMES AND FLOORS

- Heavy-duty steel frame undercarriage with detachable hitch
- Seamless reinforced fibremesh sealite underbelly between chassis and floor
- 2" x 8" floor joists on 16" centers
- 5/8" Dri Deck tongue-and-groove subflooring glued and screw-nailed to floor joist
- Heat ducts within insulated floor cavity with 4" x 10" registers
- 1/2" main gas line with outlet at back end

SIDEWALLS

- 2" x 4" wall studs on 16" centers (Single Wide and Unit with Dormered Addition)
- 2" x 6" wall studs on 16" centers (Double Wide Floorplans)
- 90" high sidewalls with unique belt-rail structural stiffeners
- 6-mil. poly vapour barrier
- 1/4" exterior sheathing
- Pre-finished vinyl interior wallboard
- Tyvek exterior building wrap
- Horizontal exterior vinyl siding

ROOF AND CEILING

- 4/12 roof pitch with overhangs on single wide units
- 3.5/12 roof pitch with overhangs on double wide units
- Pre-engineered roof trusses on 16" centers (88 lbs. per sq. ft. ground snow load)
- 7/16" roof sheathing
- 6-mil. poly vapour barrier
- Ice and water shield protection at the eave
- Self-sealing fiberglass asphalt architectural shingles (limited lifetime warranty)
- Vented attic space to eliminate moisture and heat build-up
- Continuous vinyl vented soffit and fascia
- Pre-textured drywall ceiling panel

PLUMBING

- Heatlink cross-linked polyethylene water lines and fittings
- 16-gallon propane gas/electric direct spark ignition (DSI) fast-recovery water heater
- Water heater by-pass
- 4.8-litre ultra-low-flush water-saver toilet with insulated tank

- Designer vanity with a porcelain sink
- Deluxe built-in medicine cabinet with mirror and open shelf
- Deluxe one-piece fiberglass tub/shower combination with a curved rod and colour coordinating tub drapery panel
- Deluxe one-piece Shower with glass doors in Bath #2
- Chrome high-arch single lever kitchen faucet with pull-out spray
- Chrome dual lever vanity faucet
- Chrome towel bar and tissue holder
- Double compartment 8" deep stainless

ELECTRICAL AND HEATING

- 24-circuit 30-amp hydro panel with 30' plug-in cord
- 120-volt heat tape junction box at water inlet
- Electric smoke/CO2 detector
- Safe-T-Alert gas alarm
- Decora-style light switches and receptacles
- Wired and prepared for basement air conditioning
- 50-cfm bathroom exhaust fan
- Interior GFCI-protected receptacle in bathroom and kitchen
- 2 Exterior GFCI-protected receptacles
- Exterior coach light at all doors
- 56,000 BTU forced air propane furnace with electronic ignition and wall thermostat
- Fresh air inlet to furnace
- White LED residential interior light fixtures & recessed LED pot lights in kitchen, living room & bathroom
- Pendant lights over island and chandelier over Dining Table where applicable
- TV access box in master bedroom and living room
- USB Receptacle in Kitchen and Bedroom 1

WINDOWS AND DOORS

- White vinyl Northstar Thermopane single-hung (tilt to clean) windows with low "E" glass, 3 1/2" brickmold and removable screens
- 32"x 80" pre-finished white maintenance free insulated residential exterior door with large window, and heavy duty aluminium selfstoring storm door
- White vinyl Northstar Thermopane patio door with low "E" glass, screen and no grills

- Pentagon or trapezoid Thermopane window with low "E" on front end where floorplan permits

INSULATION

- Ceilings: R-32 Owens Corning pink fiberglass batt insulation (Single Wide and Units with Dormered Addition)
- Ceilings: R-40 Owens Corning pink fiberglass batt insulation in ceiling (Double Wide Floorplans)
- 2x4 Walls: R-12 Owens Corning pink fiberglass batt insulation
- 2x6 Walls: R-20 Owens Corning pink fiberglass batt insulation
- Floors: R-24 Owens Corning pink fiberglass batt insulation

INTERIOR DÉCOR FINISH

- Eurobox style cabinetry with adjustable shelves, decorative crown moulding and toe kick on all kitchen cabinets
- Thermofoil shaker style cabinet doors with concealed hinges
- Large entertainment cabinet wall unit with space for an optional electric fireplace
- Premium laminate kitchen counter with laminate front edging
- Flex-tile decorative backsplash in kitchen and bathrooms
- Roller glide-out metal drawer box hardware
- Durable maintenance friendly woodgrain patterned vinyl flooring throughout
- White 2-panel interior doors with satin stainless lever door hardware
- Nightstands in master bedroom
- Storage in Master Bedroom
- Overhead cabinets above bed in master bedroom in single wides
- Storage in second and third bedrooms
- Large wardrobe closet or walk-in closet in master bedroom
- Ceiling crown mouldings throughout with casing on windows and doors
- Custom designer drapery valances on removable rods
- Bunk matt covers in second and third bedrooms
- Drapery panels at patio door



ADDISON

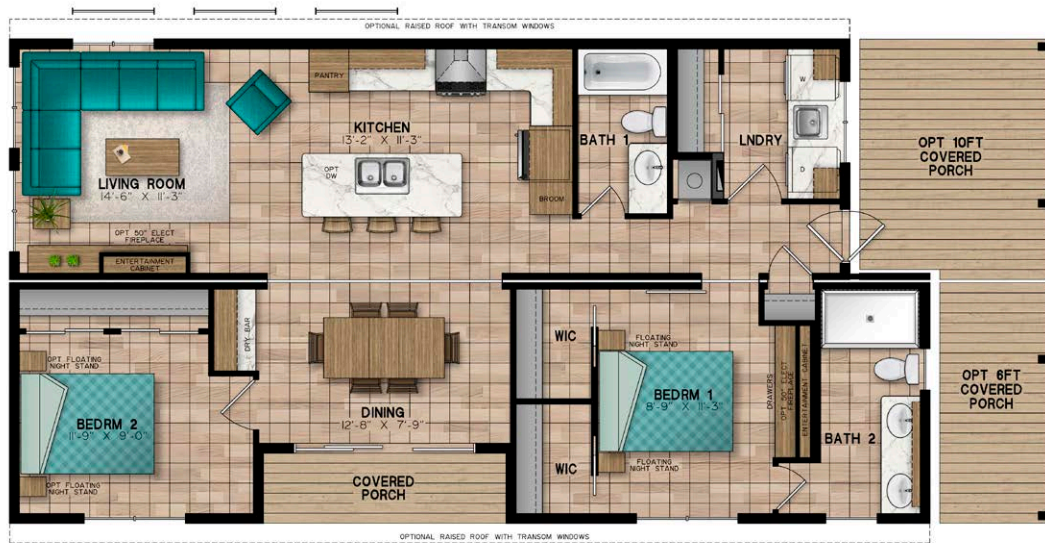
23-5084-2 | 39' x 13'-9"
Addition 39' x 12'

- 2 bedroom
- 2 bathroom
- 536 sq. ft.
- + Addition 418 sq. ft.

ANAHIEM

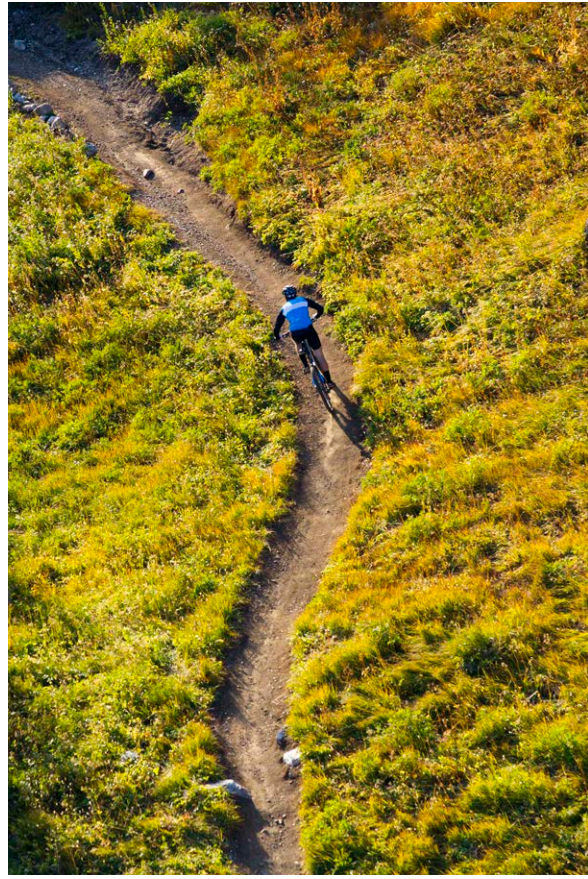
23-4918-2 | 42' x 12'
Addition 46' x 12'

- 2 bedroom
- 2 bathroom
- 504 sq. ft.
- + Addition 510 sq. ft.





let the
EXTRAORDINARY
SURROUND YOU

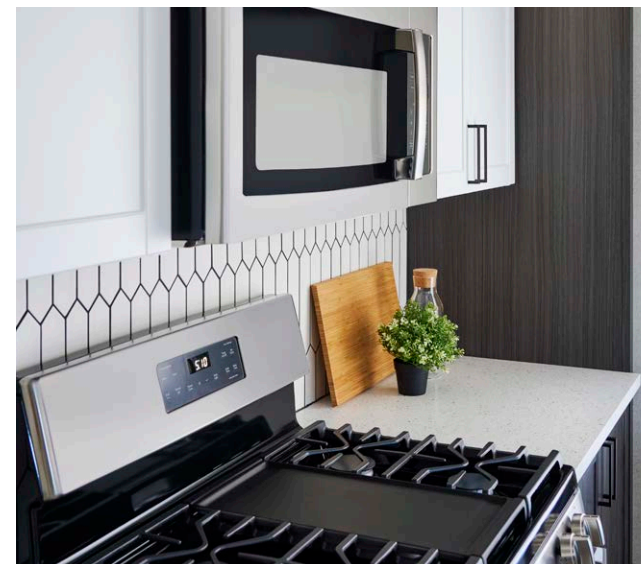




Escape

Explore the possibilities with the Escape, blending contemporary and traditional, while offering that modern edge with familiar comfort. Featuring 12ft, 13ft and 14ft wide models including units with additions, Northlander's Escape series offers a choice of space tailored to your needs. Vaulted ceilings and generous

windows flood your space with light and comfort – allowing you to experience the great outdoors – indoors! Built without sacrificing quality or comfort. It's time to leave the ordinary behind and ESCAPE to something extraordinary!



MASTER BEDROOM



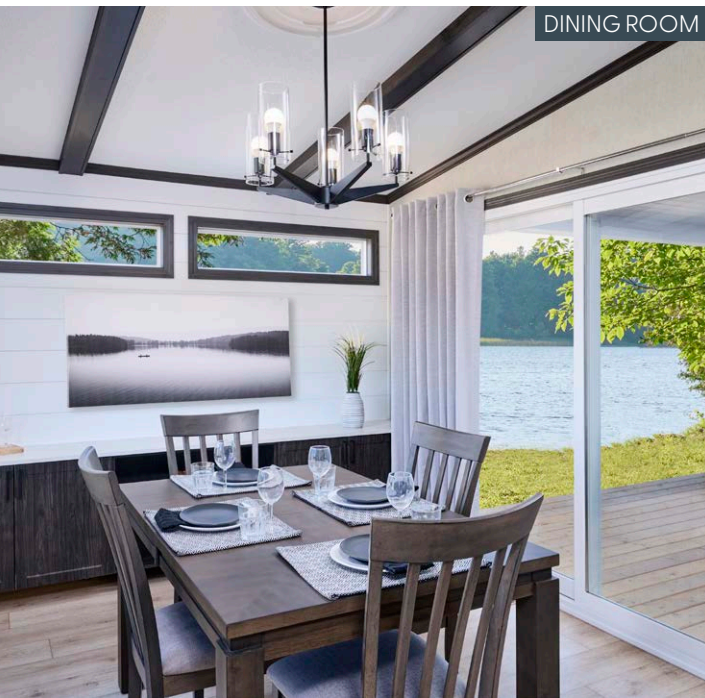
MASTER BEDROOM



LIVING ROOM



LIVING ROOM



LIT FROM ABOVE

Northlander's Escape Series offers ample solutions for lighting. Included in every model is recessed lighting in the kitchen and bath, LED fixtures throughout and modern pendants above your island or peninsula. A custom overhead with built-in lighting in the kitchen is both tasteful in design and very functional. Upgrade to matte black fixtures throughout to add a daring and bold contrast to your cottage design.

ADD A SPLASH

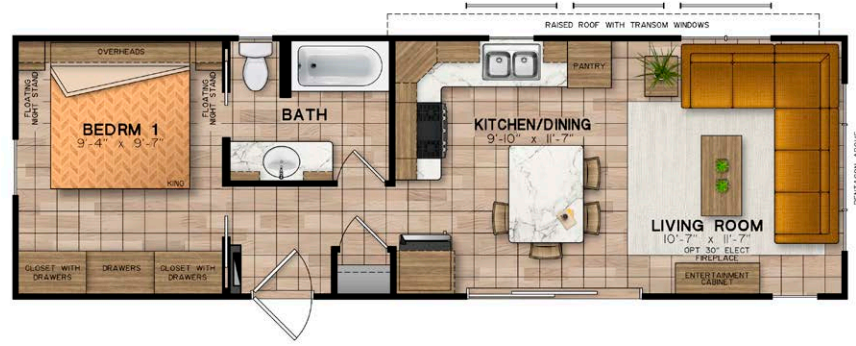
Spacious and bold – this two-toned kitchen showcases Northlander's quality and craftsmanship. Eurobox cabinetry and Shaker doors are paired with sleek Matte Black hardware and fixtures to create this one-of-a-kind look! In addition this functional kitchen is upgraded with a mesmerizing backsplash that truly sets this space above the rest.

DINING WITH A VIEW

Whether you are gathered around the island or relaxing in the living room, Northlander's Escape Series allows you to enjoy your time with a view. This Escape floorplan provides ample windows and expansive Transom Rooflines featuring ceiling beams that allows the natural light to flood your open concept space...bringing the outdoors-in!

360 DEGREES OF DESIGN

Offering 5 new décor packages, 3 new flooring options and countless upgrades the Escape Series allows for a full 360° of customization. Northlander takes pride in their teams ability to help create the cottage of your dreams.



EMERSON

23-5052-1 | 38' x 12'

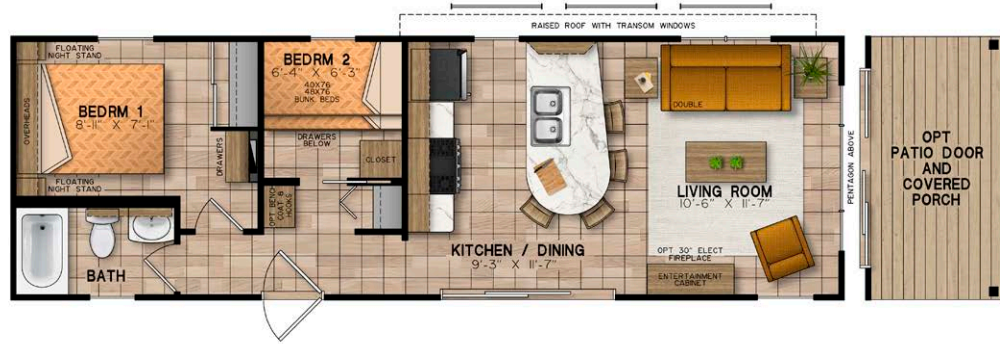
- 1 bedroom
- 1 bathroom
- 456 sq. ft.



EVERLY

23-5141-2 | 40' x 12'

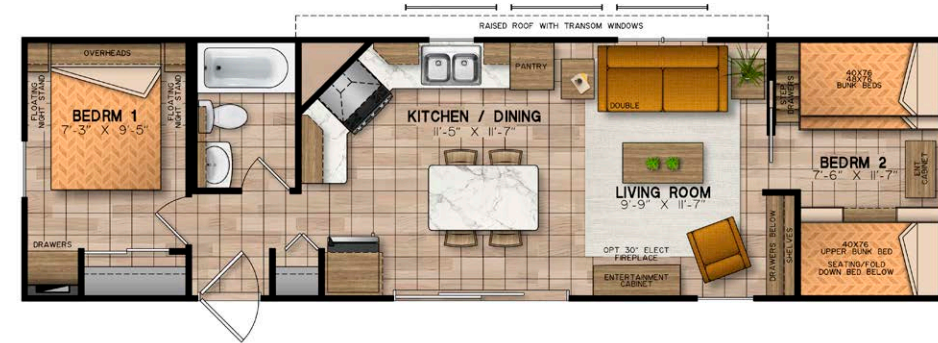
- 2 bedroom
- 1 bathroom
- 485 sq. ft.



ELKHART

23-4844-2 | 38' x 12'

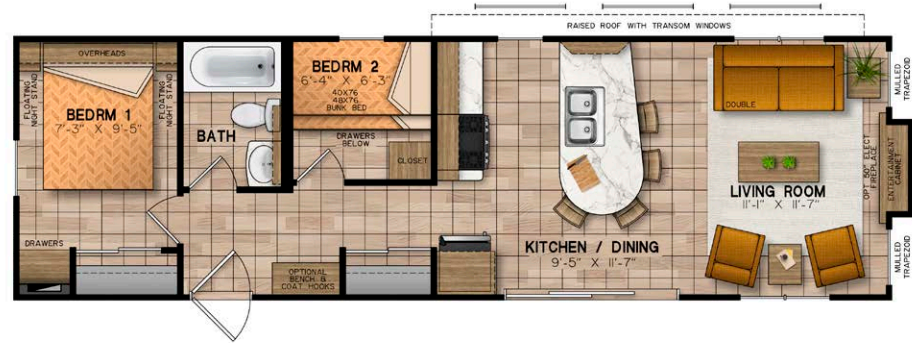
- 2 bedroom
- 1 bathroom
- 456 sq. ft.



ESSEX

23-4725-2 | 42' x 12'

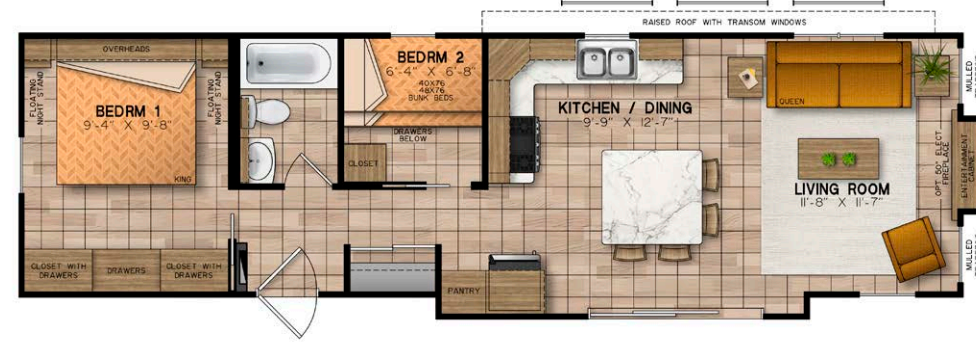
- 2 bedroom
- 1 bathroom
- 504 sq. ft.



ELMIRA

23-4726-2 | 40' x 12'

- 2 bedroom
- 1 bathroom
- 485 sq. ft.



EZRA

23-4979-2 | 43' x 12'

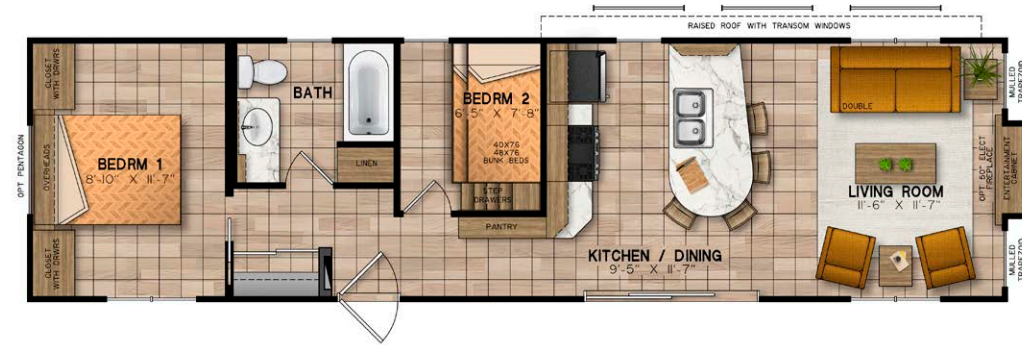
- 2 bedroom
- 1 bathroom
- 538 sq. ft.



EMERALD

23-4969-2 | 40' x 12'

- 2 bedroom
- 1 bathroom
- 480 sq. ft.



EDEE

23-4893-2 | 44'-8" x 12'

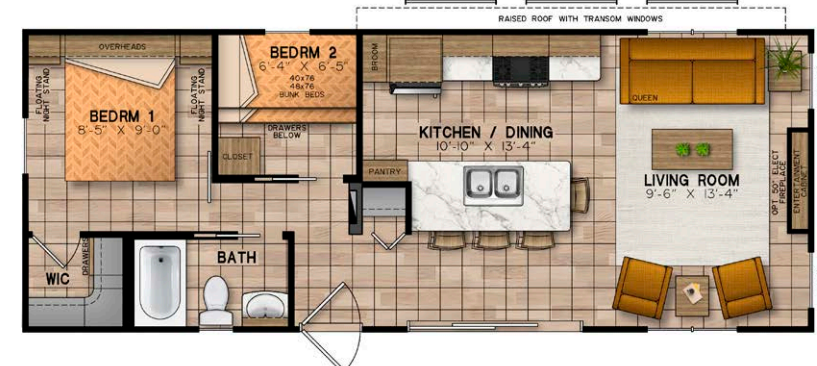
- 2 bedroom
- 1 bathroom
- 540 sq. ft.



ELMUR

23-5058-3 | 42'-11" x 12'

- 3 bedroom
- 1 bathroom
- 540 sq. ft.



ENNIS

23-5124-2 | 36' x 13'-9"

- 2 bedroom
- 1 bathroom
- 495 sq. ft.



ERWIN

23-5030-2 | 42'-8" x 12'

- 2 bedroom
- 1 bathroom
- 540 sq. ft.

Optional Bedroom 3 Layout
*Bedroom 2 Layout in place of Office



EXHIBITION

23-4720-3 | 39'-3" x 13'-9"

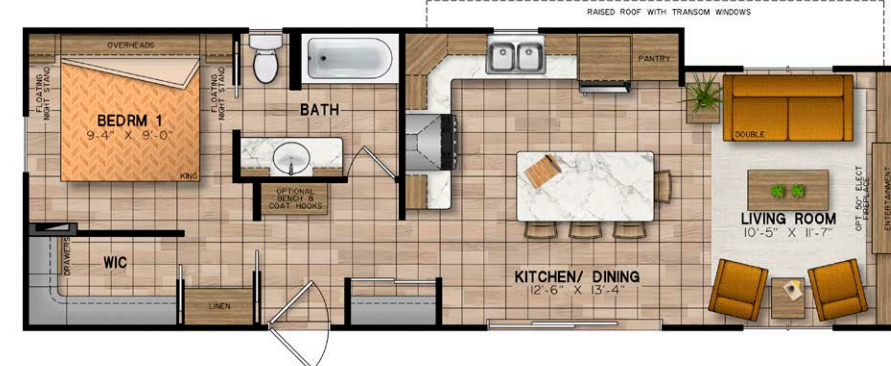
- 3 bedroom
- 1 bathroom
- 540 sq. ft.



ELORA

23-5062-2 | 42' x 13'

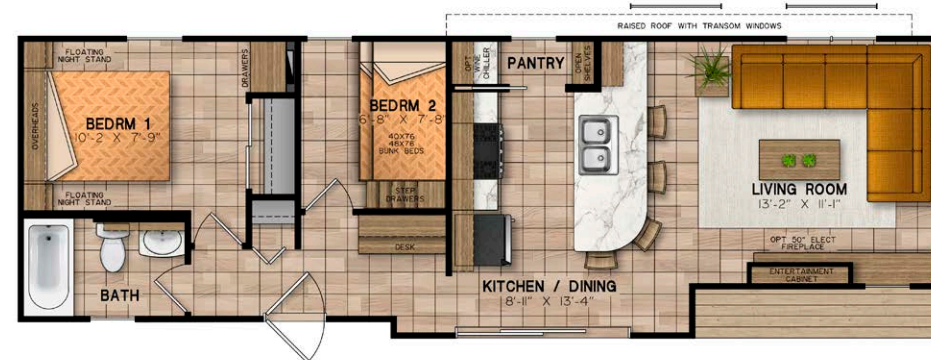
- 2 bedroom
- 1 bathroom
- 538 sq. ft.



EMBER

23-5148-1 | 40'-6" x 13'-9"

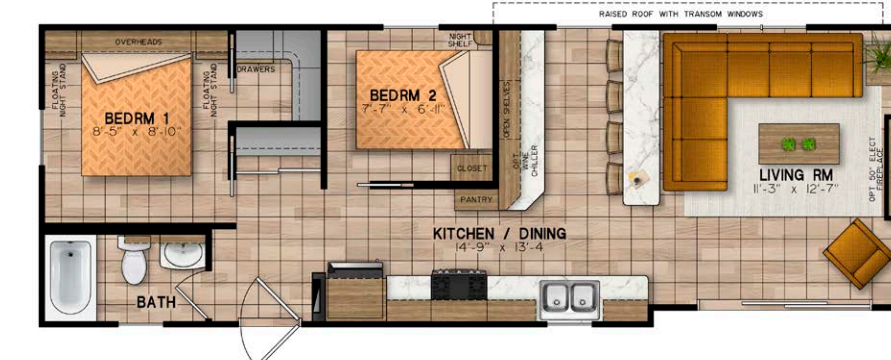
- 1 bedroom
- 1 bathroom
- 539 sq. ft.



ERIE

23-4963-2 | 42' x 13'

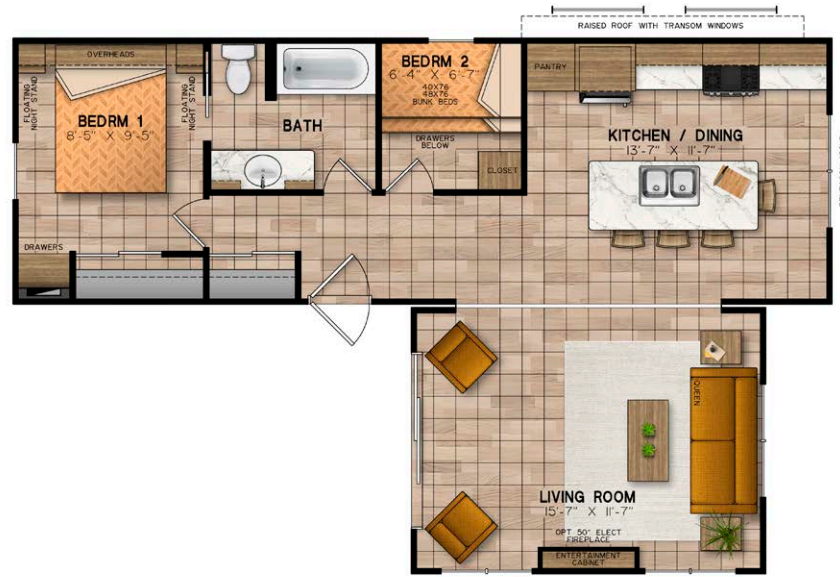
- 2 bedroom
- 1 bathroom
- 540 sq. ft.



ELKINS

23-5123-2 | 39'-9" x 13'-9"

- 2 bedroom
- 1 bathroom
- 538 sq. ft.



ECHO

23-5072-2 | 37' x 12'
Addition 16' x 12'

- 2 bedroom
- 1 bathroom
- 444 sq. ft.
- + Addition 192 sq. ft.



EDINBURGH

23-4958-3 | 40' x 12'
Addition 20' x 12'

- 3 bedroom
- 2 bathroom
- 480 sq. ft.
- + Addition 240 sq. ft.



ELLE

23-4888-2 | 28' x 13'-9\"/>
Addition 24' x 13'-9\"

- 2 bedroom
- 1 bathroom
- 390 sq. ft.
- + Addition 330 sq. ft.



ETOBICOKE

23-4850-2 | 40' x 12'
Addition 20' x 12'

- 2 bedroom
- 2 bathroom
- 480 sq. ft.
- + Addition 240 sq. ft.



EVORA

23-5140-2 | 40' x 10'
Addition 40' x 10'

- 2 bedroom
- 2 bathroom
- 400 sq. ft.
- + Addition 392 sq. ft.



ELKO

23-5125-2 | 40' x 12'
Addition 38' x 12'

- 2 bedroom
- 2 bathroom
- 480 sq. ft.
- + Addition 312 sq. ft.



EASTMAN

23-5154-3 | 40' x 12'
Addition 38' x 12'

- 3 bedroom
- 2 bathroom
- 480 sq. ft.
- + Addition 456 sq. ft.

ESCAPE SPECIFICATIONS

FRAMES AND FLOORS

- Heavy-duty steel frame undercarriage with detachable hitch
- Seamless reinforced fibremesh sealite underbelly between and floor
- 2" x 6" floor joists on 16" centers
- 5/8" Dri Deck tongue-and-groove subflooring glued and screw-nailed to floor joist
- Heat ducts within insulated floor cavity with 4" x 10" registers
- 1/2" main gas line with outlet at back end

SIDEWALLS

- 2" x 3" wall studs on 16" centers
- 90" high sidewalls with unique belt-rail structural stiffeners
- Pre-finished vinyl interior wallboard
- Tyvek exterior building wrap
- Horizontal exterior vinyl siding
- 12" decorative exterior window shutters on front and door side

ROOF AND CEILING

- 4/12 roof pitch with overhangs on single wide units
- 3.5/12 roof pitch with overhangs on double wide units
- Transom Raised Roof standard in Single Wide and & units with Dormered Addition. Optional on Double Wide Floorplans
- Pre-engineered roof trusses on 16" centers (88 lbs. per sq. ft. ground snow load)
- 7/16" roof sheathing
- Ice and water shield protection at the eave
- Self-sealing fibreglass asphalt architectural shingles (limited lifetime warranty)
- Vented attic space to eliminate moisture and heat build-up
- Continuous vinyl vented soffit and aluminium fascia
- Expansive vaulted ceiling
- Pre-textured drywall ceiling panel

PLUMBING

- Heatlink cross-linked polyethylene water lines and fittings
- 16-gallon propane gas/electric direct spark ignition (DSI) fast-recovery water heater
- Water heater by-pass

- 4.8-litre ultra-low-flush water-saver toilet with insulated tank
- Designer vanity with a porcelain sink and laminate countertop
- Deluxe built-in medicine cabinet with mirror and open shelf
- Deluxe one-piece fibreglass tub/shower combination with a curved rod and colour coordinating tub drapery panel
- Chrome high-arch single lever kitchen faucet with pull-out spray
- Chrome dual lever vanity faucet
- Chrome towel bar and tissue holder
- Double compartment 8" deep stainless steel kitchen sink

ELECTRICAL AND HEATING

- 24-circuit 30-amp hydro panel with 30' plug-in cord
- Electric smoke/CO2 detector
- Safe-T-Alert gas alarm
- Decora-style light switches and receptacles
- Wired and prepared for basement air conditioning
- 50 cfm bathroom exhaust fan
- Interior GFCI-protected receptacle in bathroom and kitchen
- 2 Exterior GFCI-protected receptacles
- Exterior coach light at patio door
- 40,000 BTU forced air propane furnace with in-floor ducting, electronic ignition and wall thermostat
- 56,000 BTU forced air propane furnace with electronic ignition and wall thermostat in some floorplans.
- White LED residential interior light fixtures & recessed LED pot lights in kitchen & bath
- Pendant lights over island where applicable
- TV access box in master bedroom and living room
- USB Receptacle in Kitchen

WINDOWS AND DOORS

- White vinyl Thermopane single-hung (tilt to clean) windows with removable screens
- 32"x 80" pre-finished white maintenance free insulated residential exterior door with large window, and heavy-duty aluminum self-storing storm door
- White Thermopane patio door with screen

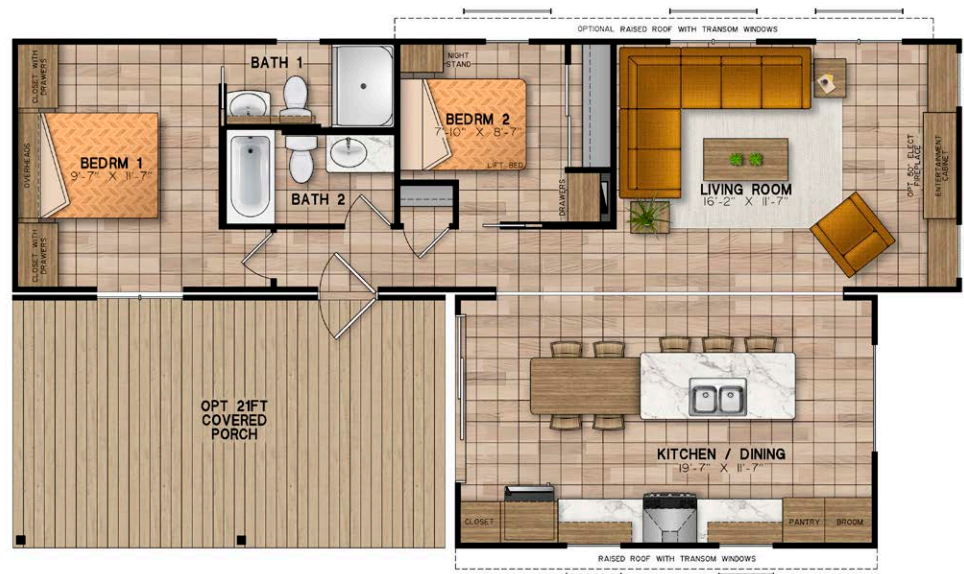
- Pentagon or Trapezoid Thermopane window on front end where floorplan permits

INSULATION

- Ceilings: R-12 Owens Corning pink fibreglass batt insulation
- Walls: R-8 Owens Corning pink fibreglass batt insulation
- Floors: R-12 Owens Corning pink fibreglass batt insulation

INTERIOR DÉCOR FINISH

- Eurobox style cabinetry with adjustable shelves, decorative crown moulding and toe kick on all kitchen cabinets
- Thermofoil shaker style cabinet doors with concealed hinges
- Large entertainment cabinet wall unit with space for an optional electric fireplace
- Premium laminate kitchen counter with laminate front edging
- Flex-tile decorative backsplash in kitchen and bathrooms
- Roller glide-out metal drawer box hardware
- Durable maintenance friendly woodgrain patterned vinyl flooring throughout
- White 2-panel interior doors with satin stainless lever door hardware
- Nightstands in master bedroom
- Built-in chest of drawers in master bedroom (most floorplans)
- Overhead cabinets above bed in master bedroom (most floorplans)
- Wardrobe storage in second and third bedrooms
- Large wardrobe closet with mirrored sliders or walk-in closet in master bedroom
- Ceiling crown mouldings throughout with casing on windows and doors
- Custom designer drapery valances on removable rods
- Bunk matt covers in second and third bedrooms
- Drapery panels at patio door



EXTON

23-4960-2 | 45' x 12'
Addition 20' x 12'

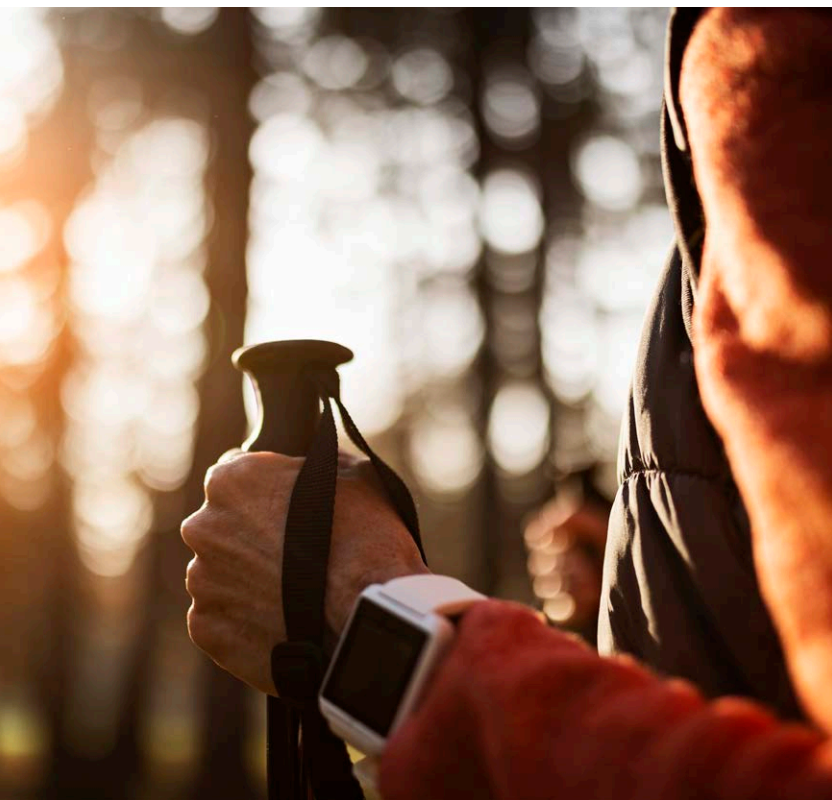
- 2 bedroom
- 2 bathroom
- 540 sq. ft.
- + Addition 240 sq. ft.



EDISON

23-4849-3 | 39' x 13'-9"
Addition 18' x 12'

- 3 bedroom
- 2 bathroom
- 536 sq. ft.
- + Addition 216 sq. ft.



discover
YOUR NEW
VIEW



Reflection

Imagine a calm lake... you are standing on a dock. What do you see when you look into the serene water? Your reflection. At Northlander, we strive to make our units reflect our customers and their desires. If you crave a well-built, attractive retreat, our ultra-popular Reflection is a great investment. With one-,

two- and three-bedroom plans to choose from, the Reflection is sure to accommodate you and the needs of your family. At Northlander, comfort and quality is standard, and you can be assured your vacation retreat will stand the test of time. Find the beauty in simplicity and take pride in your Reflection!



KITCHEN



BEDROOM



LIVING ROOM



MASTER BEDROOM



BATHROOM



KITCHEN

FIND YOUR STYLE

Reflect on all the possibilities when selecting your Northlander Reflection. Featuring 7 floorplans with 3 Designer Décor packages and a wide range of Vinyl Siding colours, you will be sure to enjoy the cottage life you've been dreaming of.

CALM AND QUIET LIVING

Northlander has made it possible for everyone to enjoy the casual cottage lifestyle. Featuring 96" sidewalls and widespread flat ceilings, you'll feel right at home in this open concept living space.

REFRESH AND RENEW

All of Northlander's Reflection Series feature a 3-piece bath with mirrored medicine cabinet and chrome towel bar. Included is an easy-to-clean fibreglass tub/shower with Designer Valance or opt to upgrade to a one-piece shower with glass doors if you prefer.

PACK YOUR BAGS

When purchasing your Northlander Reflection rest assured, we've got you covered. Kitchen appliances, furnishing and linens are all included. Just pack up your car with groceries and your weekend bag, and you will be ready to relax and enjoy the family fun.



REDKEY

23-4952-1 | 36' x 12'

- 1 bedroom
- 1 bathroom
- 432 sq. ft.

Optional Living Room Layout

*Sectional Optional in 23-4952-1 Only



RUSSELTON

23-4967-2 | 38' x 12'
Addition 16' x 12'

- 2 bedroom
- 1 bathroom
- 456 sq. ft.
- + Addition 192 sq. ft.



RAGSDALE

23-4953-2 | 38' x 12'

- 2 bedroom
- 1 bathroom
- 456 sq. ft.



RICHLAND

23-4968-3 | 38' x 12'
Addition 16' x 12'

- 3 bedroom
- 1 bathroom
- 456 sq. ft.
- + Addition 192 sq. ft.



RIDGEVILLE

23-4954-2 | 38' x 12'

- 2 bedroom
- 1 bathroom
- 456 sq. ft.



RALLY

23-4966-2 | 38' x 12'
Addition 16' x 12'

- 2 bedroom
- 1 bathroom
- 456 sq. ft.
- + Addition 192 sq. ft.



RILEY

23-4955-3 | 38' x 12'

- 3 bedroom
- 1 bathroom
- 456 sq. ft.

REFLECTION SPECIFICATIONS

FRAMES AND FLOORS

- Heavy-duty steel frame undercarriage with detachable hitch
- Seamless reinforced fibremesh sealite underbelly between chassis and floor
- 2" x 6" floor joists on 16" centers
- 5/8" Dri Deck tongue-and-groove subflooring glued and screw-nailed to floor joist
- Heat ducts within insulated floor cavity with 4" x 10" registers
- 1/2" main gas line with outlet at back end

SIDEWALLS

- 2" x 3" wall studs on 16" centers
- 96" high sidewalls with unique belt-rail structural stiffeners
- Pre-finished vinyl interior wallboard (Norwich Pearl ONLY)
- Tyvek exterior building wrap
- Horizontal exterior vinyl siding
- 12" decorative exterior window shutters on front and door side

ROOF AND CEILING

- 4/12 roof pitch with overhangs
- Pre-engineered roof trusses on 16" centers (88 lbs. per sq. ft. ground snow load)
- 7/16" roof sheathing
- Ice and water shield protection at the eave
- Self-sealing fibreglass asphalt architectural shingles (limited lifetime warranty)
- Vented attic space to eliminate moisture and heat build-up
- Continuous vinyl vented soffit and aluminum fascia
- Lofty flat ceiling throughout entire unit
- Pre-textured drywall ceiling panel

PLUMBING

- Heatlink cross-linked polyethylene water lines and fittings
- 16-gallon propane gas/electric direct spark ignition (DSI) fast-recovery water heater
- Water heater by-pass
- 4.8-litre ultra-low-flush water-saver toilet with insulated tank
- Deluxe one-piece fibreglass tub/shower combination with colour coordinating tub valance

- Vanity with white finish, porcelain top and 2 handle chrome faucet
- Deluxe white medicine cabinet with mirror
- Chrome towel bar and tissue holder
- Double compartment 8"-deep stainless steel kitchen sink
- Chrome single lever faucet in kitchen

ELECTRICAL AND HEATING

- 24-circuit 30 amp hydro panel with 30' plug-in cord
- Electric smoke detector
- Safe-T-Alert gas alarm
- Decora-style light switches and receptacles
- Wired and prepared for basement air conditioning
- 50 cfm bathroom exhaust fan
- Interior GFCI-protected receptacle in bathroom and kitchen
- 2 Exterior GFCI-protected receptacles
- Exterior coach light at patio door
- 40,000 BTU forced air propane furnace with in-floor ducting, electronic ignition and wall thermostat
- Brushed pewter residential interior light fixtures and Ceiling Fan (Living Room) with LED bulbs and White Recessed Pot Lights in Kitchen
- TV access box in living room & 21-4954-2 bedroom #2
- USB Receptacle in Kitchen

WINDOWS AND DOORS

- Deluxe vinyl Thermopane single-hung (tilt-to-clean) windows with removable screens
- 32" x 80" pre-finished white maintenance-free insulated residential exterior door with large window, and heavy-duty aluminum selfstoring storm door
- White vinyl 60" x 80" Thermopane patio door with screen

INSULATION

- Ceilings: R-12 Owens Corning pink fibreglass batt insulation
- Walls: R-8 Owens Corning pink fibreglass batt insulation
- Floors: R-12 Owens Corning pink fibreglass batt insulation

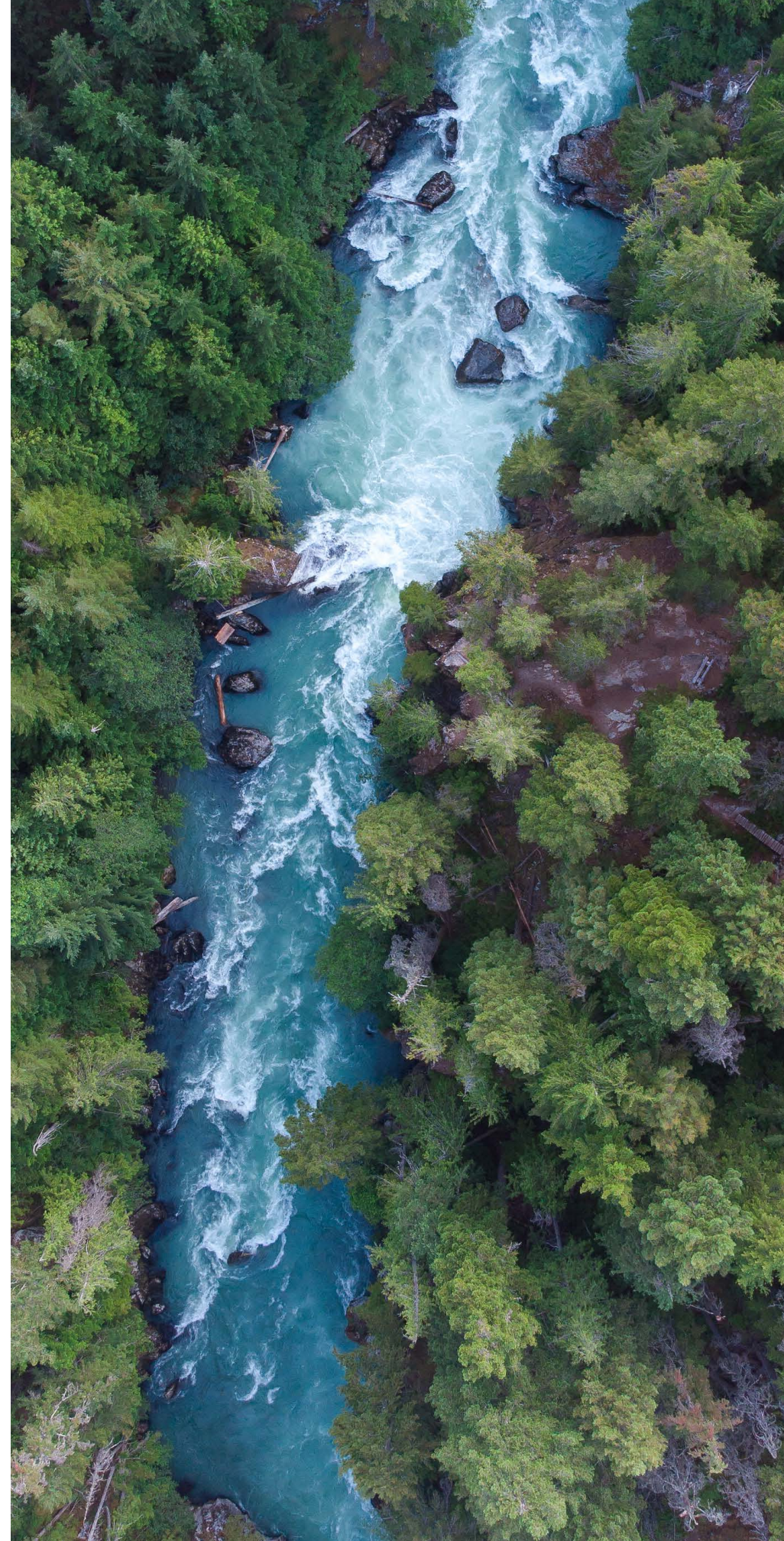
INTERIOR DÉCOR FINISH

- Eurobox style cabinetry with adjustable shelves, decorative crown moulding and toe kick on all kitchen cabinets
- Thermofoil beveled edge cabinet doors with concealed hinges
- Freestanding entertainment cabinet with space for an optional electric fireplace
- Freestanding entertainment cabinet in 23-4954-2 and 23-4967-2 bedroom #2
- Premium laminate kitchen counter with laminate front edging
- Roller glide-out metal drawer box hardware
- Durable maintenance friendly woodgrain vinyl flooring throughout (960M Texas Oak ONLY)
- White colonial interior doors with satin stainless steel door hardware
- Floating nightstands in master bedroom
- Overhead cabinets above bed in master bedroom
- Drawers below bunk beds in second and third bedrooms
- Large wardrobe closet with mirrored sliding doors in master bedroom
- Custom designer drapery valances on removable rods
- Bunk matt covers in second and third bedrooms
- Drapery Rod with Panels at patio door

Note: After Hours trim package with white kitchen & bathroom cabinetry ONLY .

Single Units Include: Stainless appliances, 4 bar stools, sofa & stationary chair in same upholstery (2 chairs in 23-4952-1 or Optional Sectional & 1 Stationary chair in 23-4952-1), coffee table, end table, lamp, Queen Duvet Cover with Skirt and Shams, Bunk Covers in Bedroom 2 & 3.

Units with Additions Include: Stainless appliances, 3 bar stools, 5 pc. dinette set, sofa & stationary chair in same upholstery, coffee table, end table and lamp.



NORTHLANDER WARRANTY

1-Year product warranty, factory to consumer via dealer

5-Year limited warranty for components and performance relating to structural integrity, weather penetration, electrical distribution system, plumbing and heating delivery systems, window and door performance.

All Park Models manufactured by Northlander Industries are constructed in compliance with the stringent standards of the C.S.A.-Z241 Park Model Standard.

The manufacturer reserves the right to improve or modify the product, without notice or obligation, which may change materials, equipment, specifications or designs. Information contained herein is from the latest data available at the time of printing. Photographs and descriptions may contain some optional extras.

IN PROUD PARTNERSHIP with our suppliers

With over 57 years in the business, we at Northlander have dedicated our time into carefully crafting high-quality Canadian made units, built with the best materials and fabrication techniques to ensure they will stand the test of time, even in the rugged Great Canadian Outdoors.



afaforest.com



royalbuildingsolutions.com



canarm.com



A Division of Desco Plumbing and Heating Inc. watercloset.ca



WHAT DO YOU NEED TO PROTECT?™ dupont.com



Proud Distributor to Northlander for over 50 Years glpcanada.com



Your Local Source for Industrial and Construction Supplies industrialchoicesupply.com



sga.ca



marathonhardware.com



northstarwindows.com



A North American Leader in Panel Processing and Conversion. Over 40 Years of Service and Quality okaply.com



russelmetals.com



slumbersleep.ca



superstylefurniture.com



Distributed By SYNTEC INDUSTRIES syntecind.com



tandelletruss.com



A company of the group SONAE INDUSTRIA tafisa.ca



trscomponents.ca



INNOVATIONS FOR LIVING™ owenscorning.ca



uniquefinefabrics.com



An AIRXCEL Brand unitedshade.com



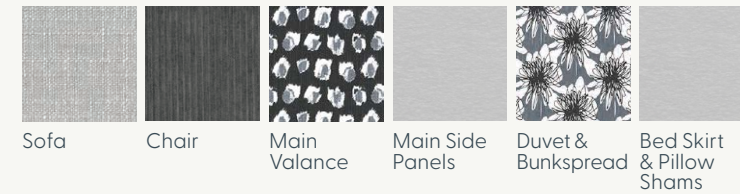
A GRAINGER COMPANY wfsltd.com



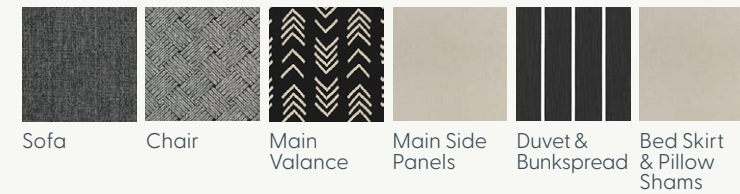


décor PACKAGES

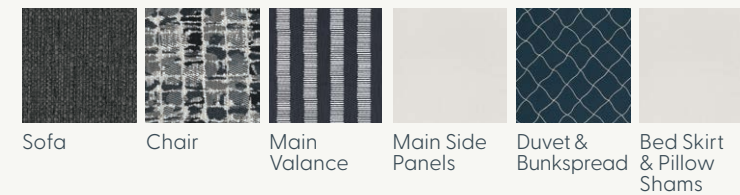
MIDSUMMER MELODY*



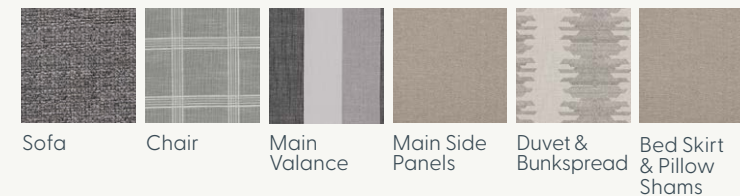
SMOKED CENTURY*



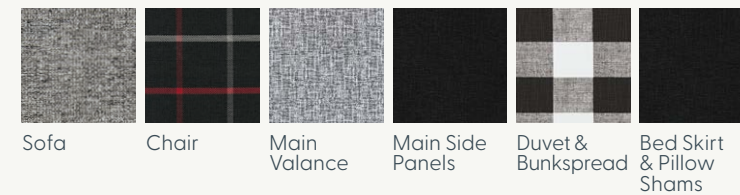
COASTAL ECHO



STONE SPARKS*



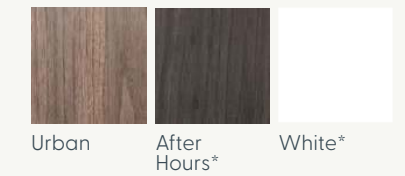
NORTHERN CABIN



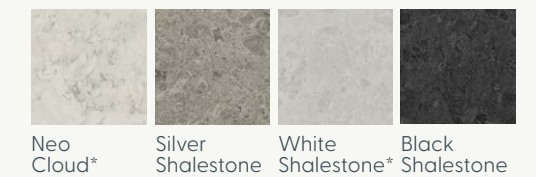
WALL BOARD



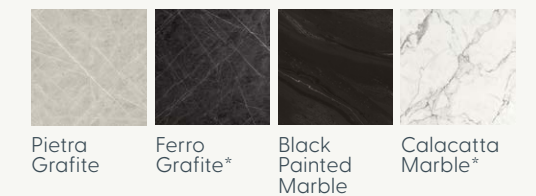
CABINETRY



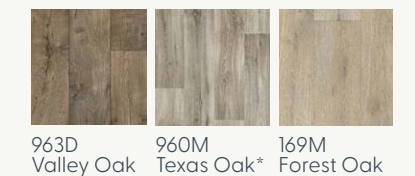
STANDARD COUNTERTOP



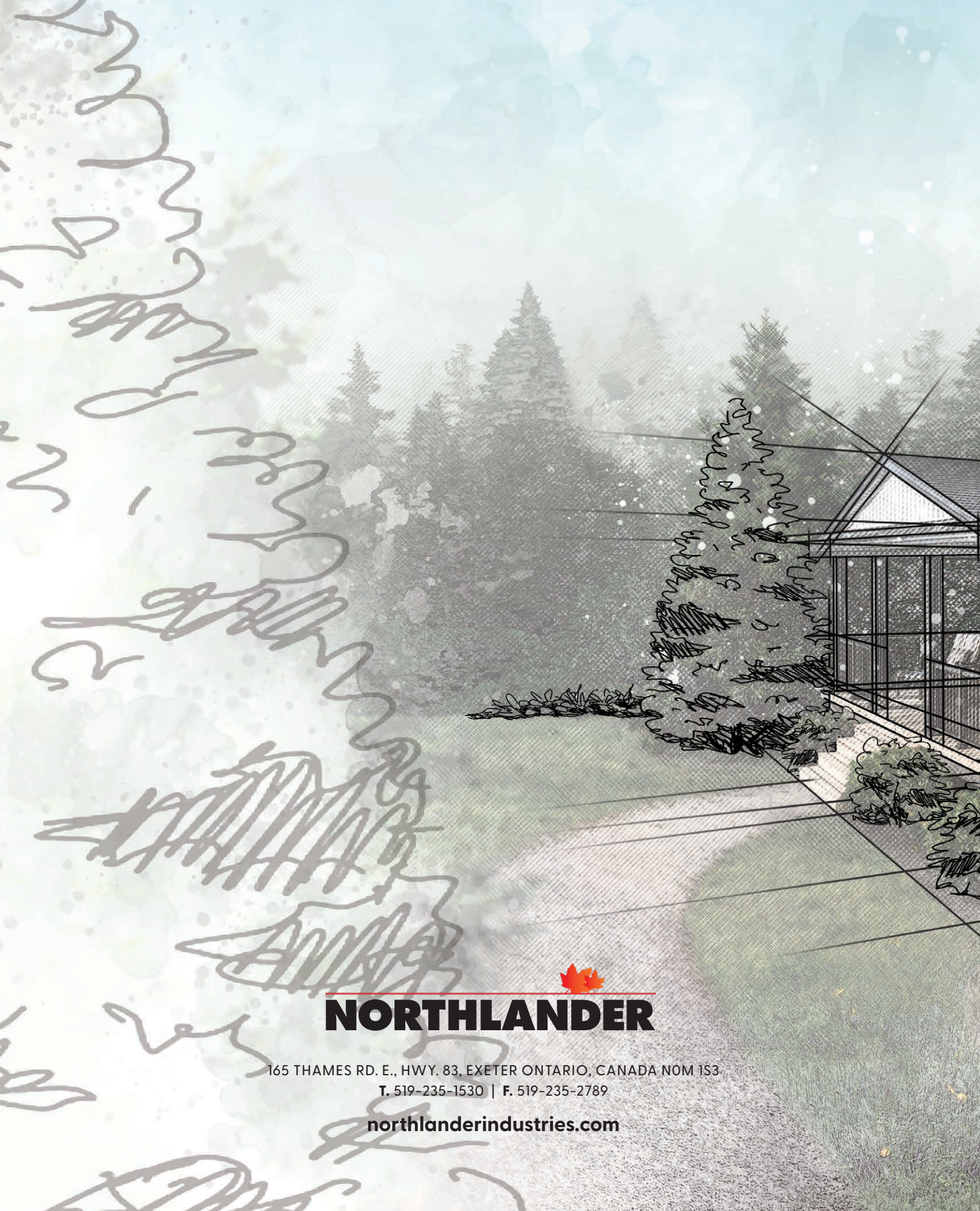
FX COUNTERTOP



VINYL FLOORING



*Available in Reflection Model. See Note on Page 42 for décor options. Photos in this brochure show optional items, and colours in photos and swatches may vary from actual colours.



NORTHLANDER

165 THAMES RD. E., HWY. 83, EXETER ONTARIO, CANADA NOM 1S3

T. 519-235-1530 | F. 519-235-2789

northlanderindustries.com